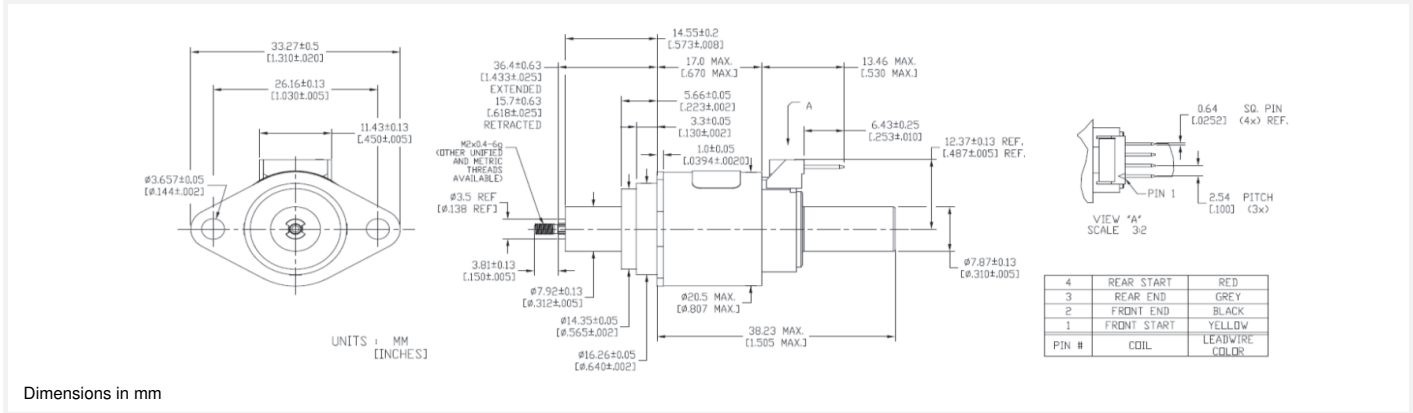


20DBM-K

RoHS Compliant

Ø20mm

50 N

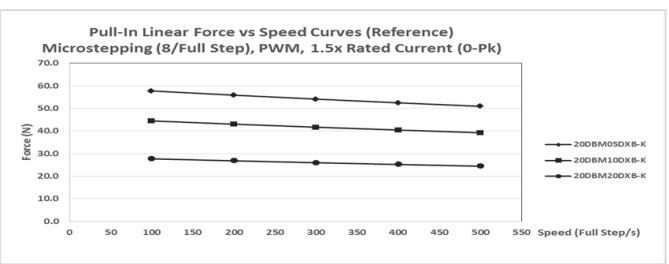
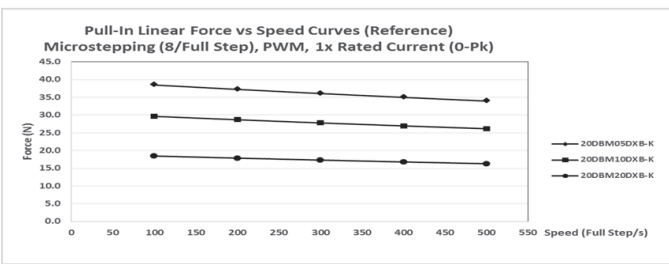
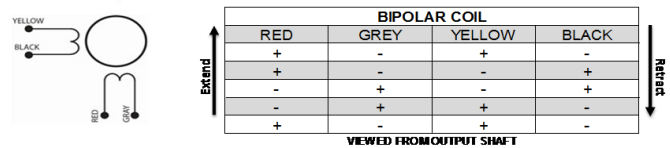


20DBM-K

Electrical Data	20DBMXXD2B-K	20DBMXXD1B-K	20DBMXXD3B-K	20DBMXXD4B-K	
	Bipolar	Bipolar	Bipolar	Bipolar	
1 Rated Voltage #	12	5	2.9	1.4	VDC
2 Resistance per Phase, ± 10%	100.5	17.5	5.7	1.4	Ohms
3 Inductance per Phase, ± 20%	45.0	7.0	2.4	0.6	mH
4 Rated Current per Phase *	0.12	0.29	0.50	1.00	A
5 Input Power *	2.9	2.9	2.9	2.9	W

Coil independent parameters				
6 Max. Holding Force*	@ .0005" (0.0127mm)		50 (180)	N (oz)
	@ .001" (0.0254mm)		35 (126)	N (oz)
	@ .002" (0.0508mm)		22 (79)	N (oz)
	@ .0005" (0.0127mm)		55.6 (200)	N (oz)
7 Min. Holding Force (Unenergized)	@ .001" (0.0254mm)		13.9 (50)	N (oz)
	@ .002" (0.0508mm)		5.5 (20)	N (oz)
8 Maximum travel			20 (0.79)	mm (in)
9 Step Angle			7.5 ± .5	Degree
10 Steps per Revolution			48	
11 Pullout Rate @ Rated Current			600	PPS
12 Rotor Inertia			1.53	g.cm2
13 Natural Resonance Frequency @ Rated Current			170	Hz
14 Ambient Temperature Range (operating)			-20 to +70 (-4 to +158)	°C (°F)
15 Maximum Coil Temperature			130 (266)	°C (°F)
16 Bearing Type ##			Ball Bearing	
17 Insulation Resistance at 500 VDC			20	Mohms
18 Dielectric Withstanding Voltage			650 for 2 seconds	VAC
19 Weight			35 (1.23)	g (oz)

All Motor Data Values at 20°C Unless Otherwise Specified * Energized at Rated Current, 2 Phase On ## Options: 8 mm, 10 mm OD available. Preload on request.



Curves created with a 5 Volt motor and a 24 Volt power supply.