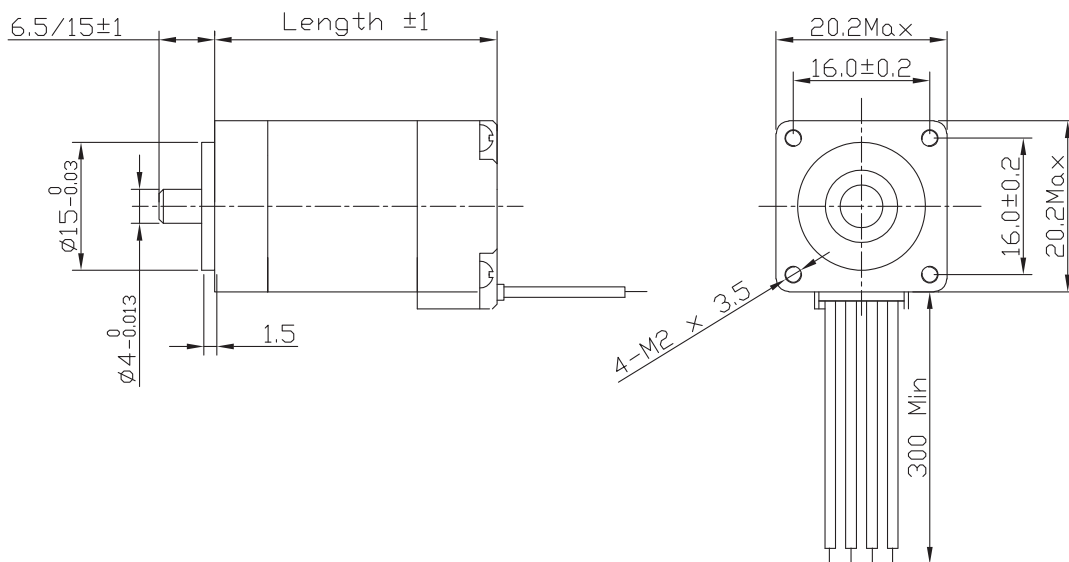


Stepper MOTOR

20SH High Torque Hybrid



Characteristics

STEP ANGLE
1,8°

STEP ANGLE ACCURACY
± 5%

INSULATION CLASS
B

AMBIENT TEMPERATURE
-20°C +50°C

TEMP. RISE
80°C MAX (RATED CURRENT, 2 PHASE ON)

INSULATION RESISTANCE
100 M OHM MIN. 500 VDC

DIELECTRIC STRENGTH
500 VAC FOR ONE MINUTE

SHAFT RADIAL PLAY
0,02 MAX (450 G LOAD)

SHAFT AXIAL PLAY
0,08 MAX. (450 G LOAD)

MAX RADIAL FORCE
28 N (10 MM FROM FRONT FLANGE)

MAX AXIAL FORCE
4 N

Connection

LEAD N°	COLOR	GAUGE	FUNCTION
1	BLACK	UL1430 AWG28	PHASE A
2	GREEN	UL1430 AWG28	PHASE A-
3	RED	UL1430 AWG28	PHASE B
4	BLUE	UL1430 AWG28	PHASE B-
UNIPOLAR MOTOR			
5	YELLOW	UL1430 AWG28	COM PHASE A
6	WHITE	UL1430 AWG28	COM PHASE B

Specification

Model		20SH33-0604A	20SH42-0804A
1 RATED VOLTAGE	V	3,96	4,32
2 CURRENT/PHASE	A	0,6	0,8
3 RESISTANCE/PHASE	Ω	6,5	5,4
4 INDUCTANCE/PHASE	mH	1,7	1,5
5 HOLDING TORQUE	Nm	0,0175	0,03
6 ROTOR INERTIA	g-cm ²	2	3,6
7 WEIGHT	Kg	0,06	0,08
8 NUMBER OF LEADS	N°	4	4
9 LENGHT	MM	33	42

Speed vs. Torque Characteristics

