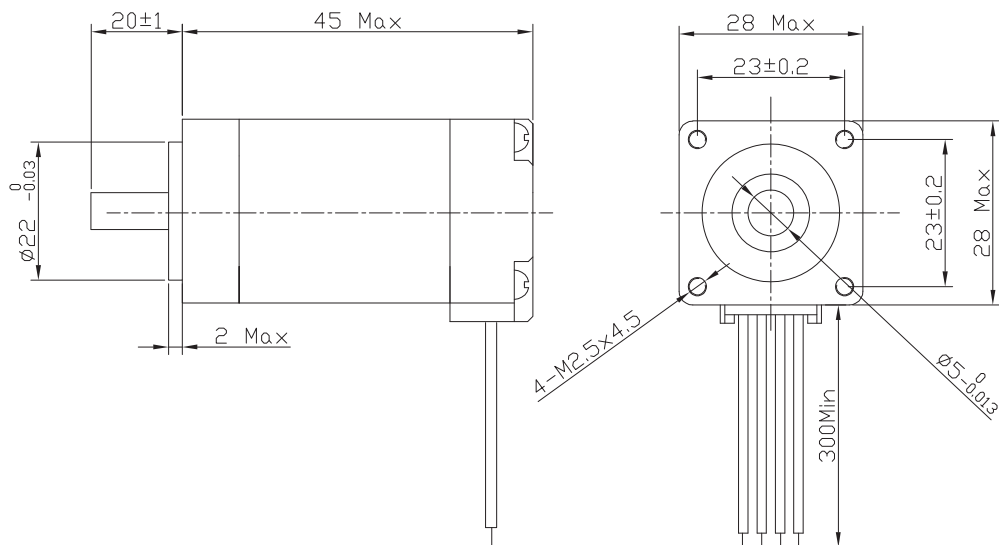


# Stepper MOTOR

**28SH45** High Torque Hybrid



BE version: rear shaft 13mm- 2x M2.5 on diam. 19.05 mm

## Characteristics

STEP ANGLE  
1,8°

STEP ANGLE ACCURACY  
± 5%

INSULATION CLASS  
B

AMBIENT TEMPERATURE  
-20°C +50°C

TEMP. RISE  
80°C MAX (RATED CURRENT, 2 PHASE ON)

INSULATION RESISTANCE  
100 M OHM MIN. 500 VDC

FIELECTRIC STRENGTH  
500 VAC FOR ONE MINUTE

SHAFT RADIAL PLAY  
0,02 MAX (450 G LOAD)

SHAFT AXIAL PLAY  
0,08 MAX. (450 G LOAD)

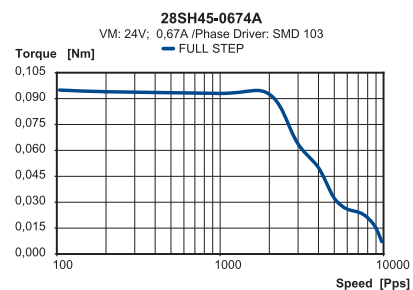
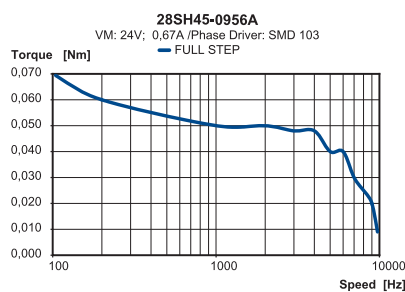
MAX RADIAL FORCE  
28 N (20 MM FROM FRONT FLANGE)

MAX AXIAL FORCE  
10 N

## Specification

Model		28SH45-0956A	28SH45-0674A	
1	RATED VOLTAGE	V	3,4	4,56
2	CURRENT/PHASE	A	0,95	0,67
3	RESISTANCE/PHASE	Ω	3,4	6,8
4	INDUCTANCE/PHASE	mH	1,2	4,9
5	HOLDING TORQUE	NM	0,075	0,095
6	ROTOR INERTIA	G-CM <sup>2</sup>	12	12
7	WEIGHT	KG	0,14	0,14
8	NUMBER OF LEADS	N°	6	4

## Speed vs. Torque Characteristics



## Connection

LEAD N°	COLOR	GAUGE	FUNCTION
1	BLACK	UL1061 AWG26	PHASE A
2	GREEN	UL1061 AWG26	PHASE A-
3	RED	UL1061 AWG26	PHASE B
4	BLUE	UL1061 AWG26	PHASE B-
<b>UNIPOLAR MOTOR</b>			
5	YELLOW	UL1061 AWG26	COM PHASE A
6	WHITE	UL1061 AWG26	COM PHASE B

