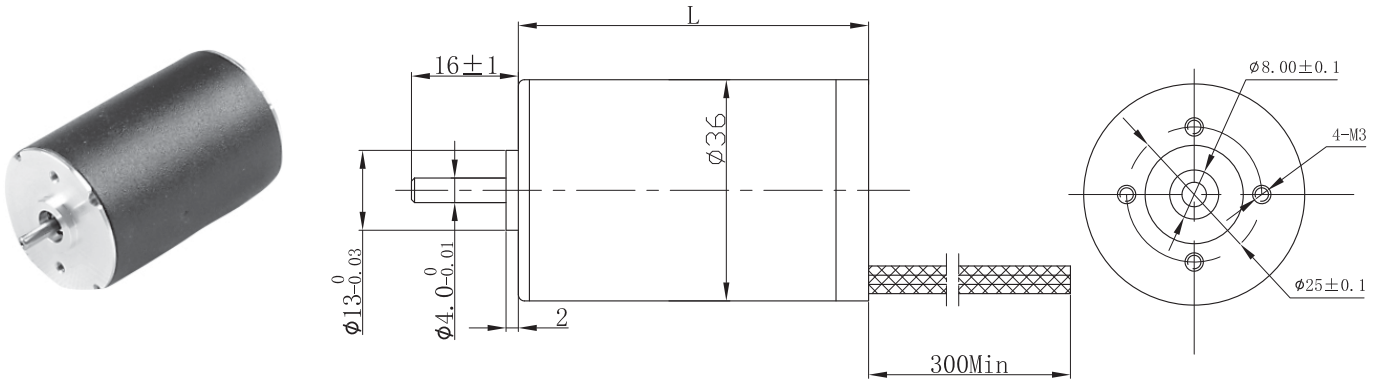


Brushless MOTOR

36RBL



BE version: rear shaft 13mm- 2x M2.5 on diam. 19.05 mm

Characteristics

HALL EFFECT ANGLE
120 ° ELECTRIC ANGLE

SHAFT RUN OUT
0,025 MM

INSULATION CLASS
B

RADIAL PLAY
0,02 MM (450 G LOAD)

AXIAL PLAY
0,08 MM (450 G LOAD)

MAX RADIAL FORCE
15N 10MM FROM FLANGE

MAX AXIAL FORCE
10N

DIELECTRIC STRENGTH
500 VDC FOR ONE MINUTE

INSULATION RESISTANCE
100 M OHM MIN. 500 VDC

Specification

Model		36RBL40	36RBL57
1	N° OF POLE	8	8
2	N° OF PHASE	3	3
3	RATED VOLTAGE	V 24	24
4	RATED SPEED	RPM 4800	4500
5	RATED TORQUE	NM 0,036	0,05
6	MAX PEAK TORQUE	NM 0,1	0,15
7	TORQUE CONSTANT	NM/A 0,032	0,039
8	LINE TO LINE RESISTANCE	Ω 2,4	2
9	LINE TO LINE INDUCTANCE	mH 2,1	2
10	MAX PEAK CURRENT	A 3,7	4,1
11	LENGTH	MM 40	57
12	ROTOR INERTIA	g-cm ² 14	24
13	WEIGHT	KG 0,16	0,25

Connection

LEAD N°	COLOR	GAUGE	FUNCTION
1	RED	UL1430 AWG26	Vcc HALL SENSOR +5 TO +24 VDC
2	BLUE	UL1430 AWG26	HALL A
3	GREEN	UL1430 AWG26	HALL B
4	WHITE	UL1430 AWG26	HALL C
5	BLACK	UL1430 AWG26	GND HALL SENSOR
6	YELLOW	UL1430 AWG22	PHASE U
7	RED	UL1430 AWG22	PHASE V
8	BLACK	UL1430 AWG22	PHASE W

