

## SPECIFICATION

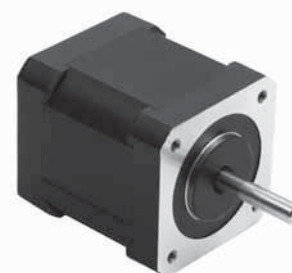
Model		423P24-0903A
1	RATED VOLTAGE	V 5,58
2	CURRENT/PHASE	A 0,9
3	RESISTANCE/PHASE	$\Omega$ 6,2
4	INDUCTANCE/PHASE	mH 3,2
5	HOLDING TORQUE	Nm 0,08
6	ROTOR INERTIA	$g \cdot cm^2$ 20
7	WEIGHT	Kg 0,14
8	NUMBER OF LEADS	3
9	LENGTH	mm 24

## CHARACTERISTICS

STEP ANGLE	1,2°
STEP ANGLE ACCURACY	$\pm 5\%$
INSULATION CLASS	B
AMBIENT TEMPERATURE	-20°C +50°C
MAX TEMP. RISE (RATED CURRENT, 2 PHASE ON)	80°C
INSULATION RESISTANCE	100 Mohm min. 500 VDC
DIELECTRIC STRENGTH	500 VAC FOR ONE MINUTE
MAX SHAFT RADIAL PLAY (450 g LOAD)	0,02 mm
MAX SHAFT AXIAL PLAY (450 g LOAD)	0,08 mm
MAX RADIAL FORCE (20 mm FROM FRONT FLANGE)	28 N
MAX AXIAL FORCE	10 N

## CONNECTION

Pin N°	Color	Gauge	Function
1	RED	UL1061 AWG26	PHASE U
2	YELLOW	UL1061 AWG26	PHASE V
3	BLUE	UL1061 AWG26	PHASE W



423P24-0903A VM: 24V; 0,9A /Phase Driver: Q3HB64

