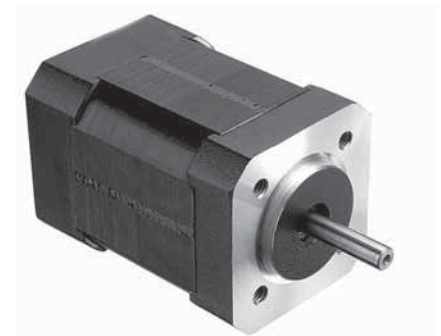


## SPECIFICATION

Model		42BLB01	42BLB02
1	N° OF POLE	6	6
2	N° OF PHASE	3	3
3	RATED VOLTAGE	V	24
4	RATED SPEED	rpm	3000
5	RATED TORQUE	Nm	0,064
6	MAX PEAK TORQUE	Nm	0,19
7	TORQUE CONSTANT	Nm/A	0,057
8	LINE TO LINE RESISTANCE	$\Omega$	3,6
9	LINE TO LINE INDUCTANCE	mH	1,8
10	MAX PEAK CURRENT	A	3,5
11	RATED CURRENT	A	1,12
12	NO-LOAD CURRENT	mA	160
13	LENGTH	mm	40,3
14	ROTOR INERTIA	g-cm <sup>2</sup>	80
15	WEIGHT	Kg	0,4

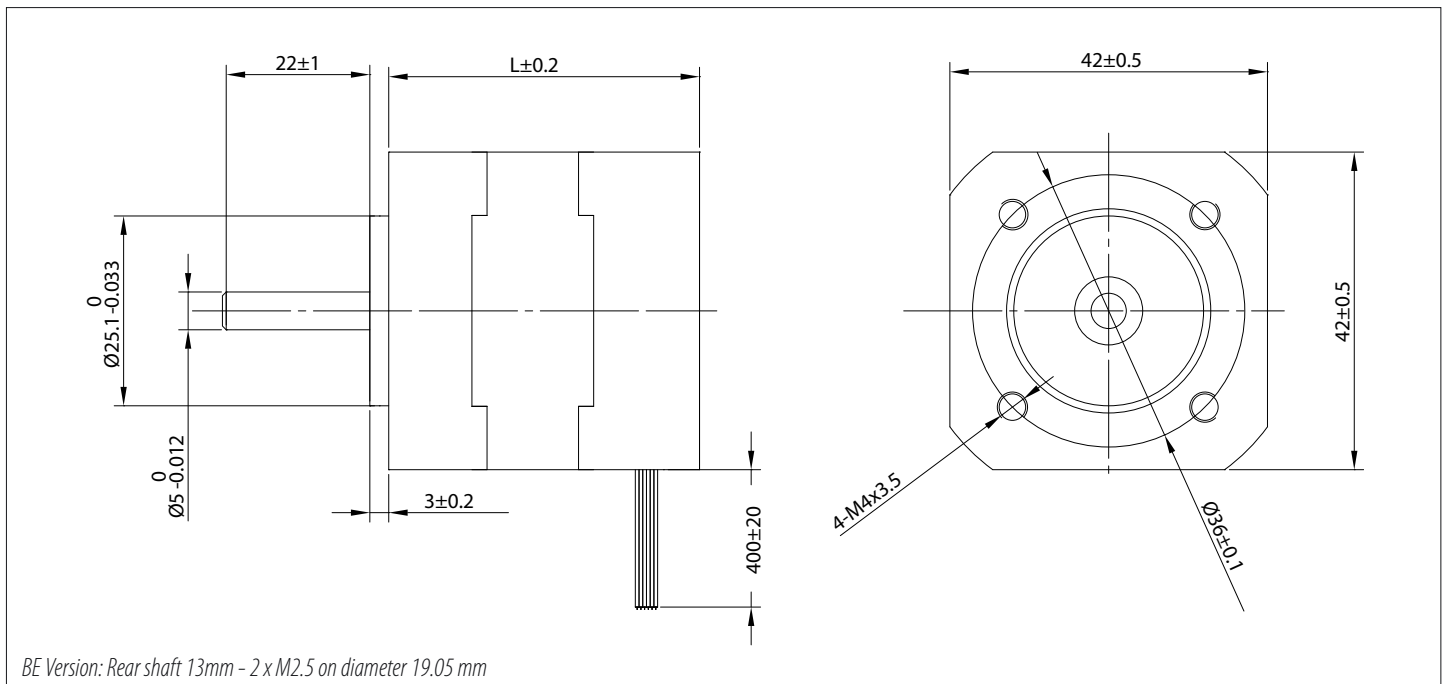


## CONNECTION

Lead N°	Color	Gauge	Function
1	RED	UL1430 AWG26	VCC HALL SENSOR +5 TO +24 VDC
2	BLUE	UL1430 AWG26	HALL A
3	GREEN	UL1430 AWG26	HALL B
4	WHITE	UL1430 AWG26	HALL C
5	BLACK	UL1430 AWG26	HALL SENSOR GROUND
6	YELLOW	UL1430 AWG20	PHASE U
7	RED	UL1430 AWG20	PHASE V
8	BLACK	UL1430 AWG20	PHASE W

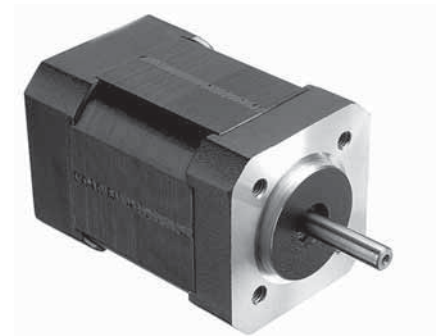
## CHARACTERISTICS

Item	
HALL EFFECT ANGLE	120°
SHAFT RUN OUT	0,025 mm
INSULATION CLASS	B
RADIAL PLAY (450 g LOAD)	0,02 mm
AXIAL PLAY (450 g LOAD)	0,08 mm
MAX RADIAL FORCE (10 mm FROM FRONT FLANGE)	28N
MAX AXIAL FORCE	10N
DIELECTRIC STRENGTH	500 VDC FOR ONE MINUTE
INSULATION RESISTANCE	100 Mohm min. 500 VDC



## SPECIFICATION

Model		42BLB03	42BLB04	
1	N° OF POLE	6	6	
2	N° OF PHASE	3	3	
3	RATED VOLTAGE	V	24	24
4	RATED SPEED	rpm	3000	3000
5	RATED TORQUE	Nm	0,3	0,43
6	MAX PEAK TORQUE	Nm	0,9	1,29
7	TORQUE CONSTANT	Nm/A	0,062	0,062
8	LINE TO LINE RESISTANCE	Ω	0,54	0,4
9	LINE TO LINE INDUCTANCE	mH	0,45	0,3
10	MAX PEAK CURRENT	A	14,5	20,8
11	RATED CURRENT	A	4,84	6,94
12	NO-LOAD CURRENT	mA	330	450
13	LENGTH	mm	80,3	100,3
14	ROTOR INERTIA	g-cm <sup>2</sup>	120	140
15	WEIGHT	Kg	0,8	1



## CONNECTION

Lead N°	Color	Gauge	Function
1	RED	UL1430 AWG26	VCC HALL SENSOR +5 TO +24 VDC
2	BLUE	UL1430 AWG26	HALL A
3	GREEN	UL1430 AWG26	HALL B
4	WHITE	UL1430 AWG26	HALL C
5	BLACK	UL1430 AWG26	HALL SENSOR GROUND
6	YELLOW	UL1430 AWG20	PHASE U
7	RED	UL1430 AWG20	PHASE V
8	BLACK	UL1430 AWG20	PHASE W

## CHARACTERISTICS

Item	
HALL EFFECT ANGLE	120°
SHAFT RUN OUT	0,025 mm
INSULATION CLASS	B
RADIAL PLAY (450 g LOAD)	0,02 mm
AXIAL PLAY (450 g LOAD)	0,08 mm
MAX RADIAL FORCE (10 mm FROM FRONT FLANGE)	28N
MAX AXIAL FORCE	10N
Dielectric Strength	500 VDC FOR ONE MINUTE
INSULATION RESISTANCE	100 Mohm min. 500 VDC