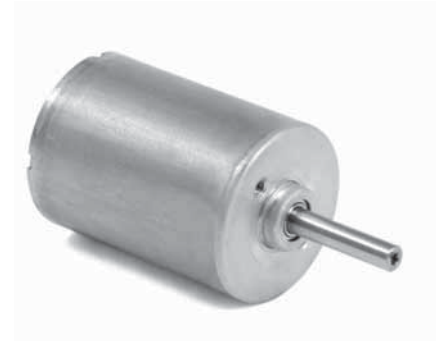


## SPECIFICATION

Model	42CBL60	
1	N° OF POLE	4
2	N° OF PHASE	3
3	RATED VOLTAGE	V 24
4	RATED SPEED	rpm 5900
5	RATED TORQUE	Nm 0,068
6	MAX PEAK TORQUE	Nm 0,2
7	TORQUE CONSTANT	Nm/A 0,032
8	LINE TO LINE RESISTANCE	Ω 0,66
9	LINE TO LINE INDUCTANCE	mH 0,63
10	NO-LOAD CURRENT	mA 430
11	MAX PEAK CURRENT	A 6,6
12	RATED CURRENT	A 2,13
13	LENGTH	mm 60
14	ROTOR INERTIA	g-cm <sup>2</sup> 44
15	WEIGHT	Kg 0,35



## CONNECTION

Lead N°	Color	Gauge	Function
1	RED	UL1430 AWG26	VCC HALL SENSOR +5 TO +24 VDC
2	BLUE	UL1430 AWG26	HALL A
3	GREEN	UL1430 AWG26	HALL B
4	WHITE	UL1430 AWG26	HALL C
5	BLACK	UL1430 AWG26	HALL SENSOR GROUND
6	YELLOW	UL1332 AWG22	PHASE U
7	RED	UL1332 AWG22	PHASE V
8	BLACK	UL1332 AWG22	PHASE W

## CHARACTERISTICS

Item	
HALL EFFECT ANGLE	120°
SHAFT RUN OUT	0,025 mm
INSULATION CLASS	B
RADIAL PLAY (450 g LOAD)	0,02 mm
AXIAL PLAY (450 g LOAD)	0,08 mm
MAX RADIAL FORCE (10 mm FROM FRONT FLANGE)	15N
MAX AXIAL FORCE	10N
DIELECTRIC STRENGTH	500 VDC FOR ONE MINUTE
INSULATION RESISTANCE	100 Mohm min. 500 VDC