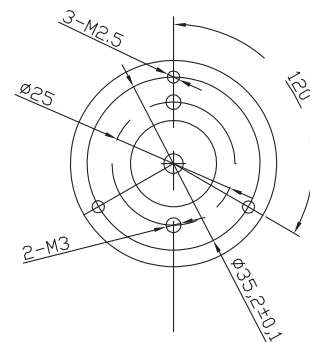
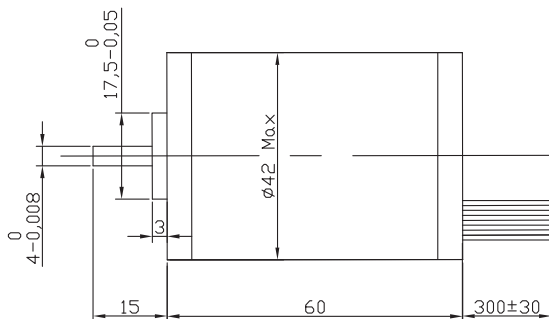
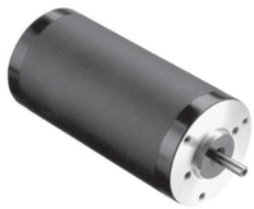


Brushless MOTOR

42RBL



BE version: rear shaft 13mm- 2x M2.5 on diam. 19.05 mm

Characteristics

HALL EFFECT ANGLE
120° ELECTRIC ANGLE

SHAFT RUN OUT
0,025 MM

INSULATION CLASS
B

RADIAL PLAY
0,02 MM (450 G LOAD)

AXIAL PLAY
0,08 MM (450 G LOAD)

MAX RADIAL FORCE
15N 10MM FROM FLANGE

MAX AXIAL FORCE
10N

DIELECTRIC STRENGTH
500 VDC FOR ONE MINUTE

INSULATION RESISTANCE
100 M OHM MIN. 500 VDC

Specification

Model		42RBL30	42RBL60	42RBL85
1	N° OF POLE	8	8	8
2	N° OF PHASE	3	3	3
3	RATED VOLTAGE	V 24	24	24
4	RATED SPEED	RPM 4000	4000	4000
5	RATED TORQUE	NM 0,02	0,06	0,15
6	MAX PEAK TORQUE	NM 0,06	0,24	0,45
7	TORQUE CONSTANT	NM/A 0,039	0,038	0,036
8	LINE TO LINE RESISTANCE	Ω 5,9	1,6	0,71
9	LINE TO LINE INDUCTANCE	MH 5,1	1,94	0,86
10	MAX PEAK CURRENT	A 1,7	5	12
11	LENGTH	MM 30	60	85
12	ROTOR INERTIA	G-CM ² 15,6	48	65
13	WEIGHT	KG 0,25	0,4	0,6

Connection

LEAD N°	COLOR	GAUGE	FUNCTION
1	YELLOW	UL1430 AWG26	Vcc HALL SENSOR +5 TO +24 Vdc
2	BLUE	UL1430 AWG26	HALL A
3	ORANGE	UL1430 AWG26	HALL B
4	BROWN	UL1430 AWG26	HALL C
5	WHITE	UL1430 AWG26	GND HALL SENSOR
6	GREEN	UL1430 AWG22	PHASE U
7	RED	UL1430 AWG22	PHASE V
8	BLACK	UL1430 AWG22	PHASE W

