

SPECIFICATION

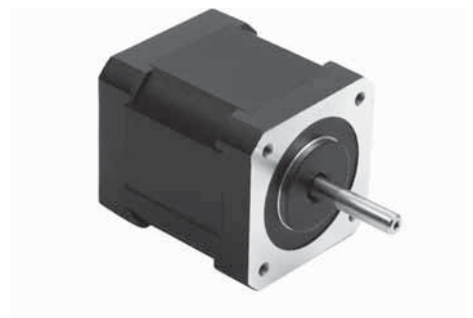
Model		42SH38-1AM	42SH38-2AM	
1	RATED VOLTAGE	V	4	6
2	CURRENT/PHASE	A	1,2	0,8
3	RESISTANCE/PHASE	Ω	3,3	7,5
4	INDUCTANCE/PHASE	mH	4,1	8,3
5	HOLDING TORQUE	Nm	0,259	0,259
6	ROTOR INERTIA	g-cm ²	54	54
7	DETENT TORQUE	g-cm	220	220
8	WEIGHT	Kg	0,28	0,28
9	NUMBER OF LEADS		6	6
10	LENGTH	mm	39,5	39,5

CHARACTERISTICS

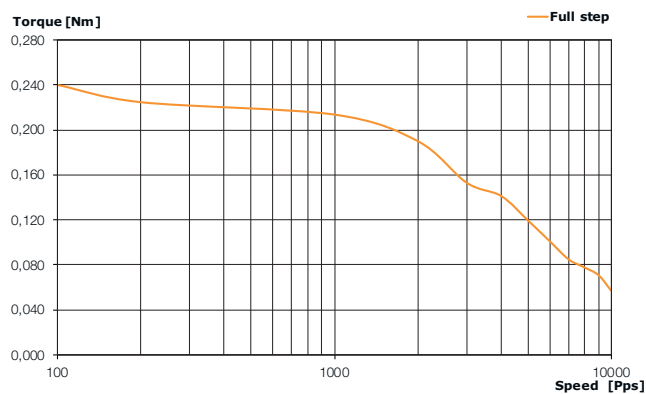
STEP ANGLE	0,9°
STEP ANGLE ACCURACY	± 5%
INSULATION CLASS	B
AMBIENT TEMPERATURE	-20°C +50°C
MAX TEMP. RISE (RATED CURRENT, 2 PHASE ON)	80°C
INSULATION RESISTANCE	100 Mohm min. 500 VDC
DIELECTRIC STRENGTH	500 VAC FOR ONE MINUTE
MAX SHAFT RADIAL PLAY (450 g LOAD)	0,02 mm
MAX SHAFT AXIAL PLAY (450 g LOAD)	0,08 mm
MAX RADIAL FORCE (20 mm FROM FRONT FLANGE)	28 N
MAX AXIAL FORCE	10 N

CONNECTION

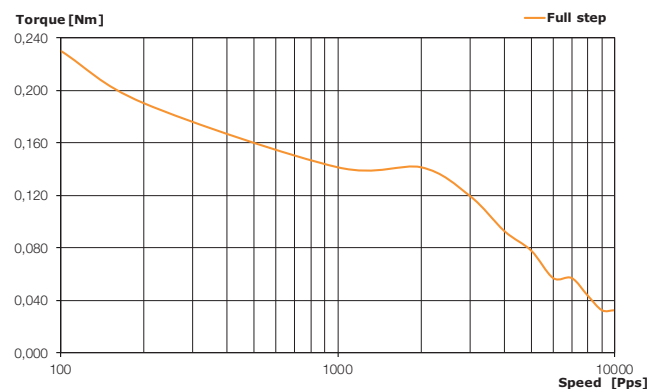
Lead N°	Color	Gauge	Function
1	BLACK	UL1061 AWG26	PHASE A
2	GREEN	UL1061 AWG26	PHASE A-
3	RED	UL1061 AWG26	PHASE B
4	BLUE	UL1061 AWG26	PHASE B-
UNIPOLAR MOTOR			
5	YELLOW	UL1061 AWG26	COM PHASE A
6	WHITE	UL1061 AWG26	COM PHASE B

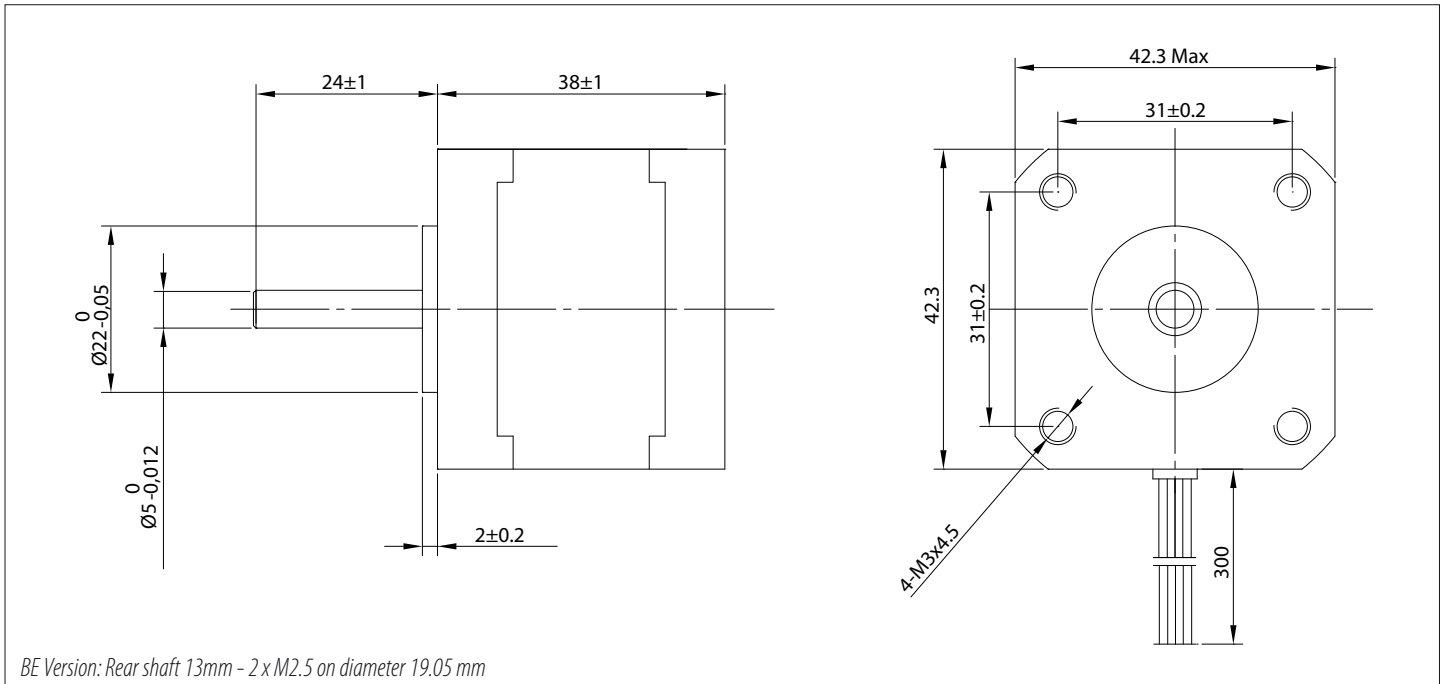


42SH38-1AM VM: 24V; 1,2A /Phase Driver: SMD 103



42SH38-2AM VM: 24V; 0,8A /Phase Driver: SMD 103





SPECIFICATION

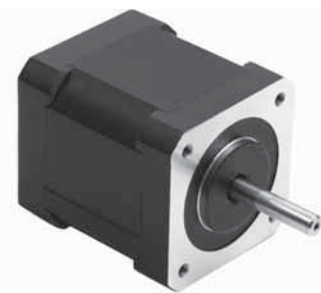
Model		42SH38-3AM	42SH38-4AM	
1	RATED VOLTAGE	V	12	2,8
2	CURRENT/PHASE	A	0,4	1,68
3	RESISTANCE/PHASE	Ω	30	1,65
4	INDUCTANCE/PHASE	mH	30	4,1
5	HOLDING TORQUE	Nm	0,259	0,36
6	ROTOR INERTIA	g-cm ²	54	54
7	DETENT TORQUE	g-cm	220	220
8	WEIGHT	Kg	0,28	0,28
9	NUMBER OF LEADS		6	4
10	LENGTH	mm	39,5	39,5

CHARACTERISTICS

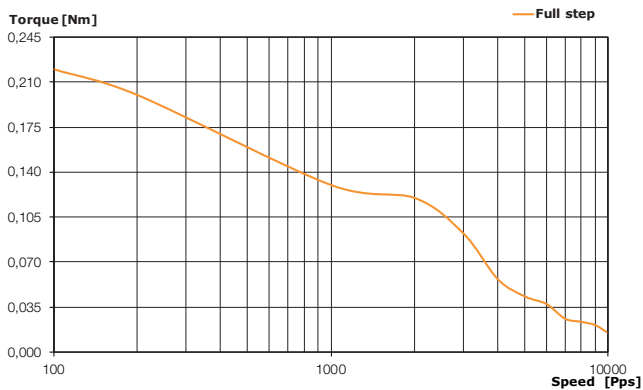
STEP ANGLE	0,9°
STEP ANGLE ACCURACY	± 5%
INSULATION CLASS	B
AMBIENT TEMPERATURE	-20°C +50°C
MAX TEMP. RISE (RATED CURRENT, 2 PHASE ON)	80°C
INSULATION RESISTANCE	100 Mohm min. 500 VDC
DIELECTRIC STRENGTH	500 VAC FOR ONE MINUTE
MAX SHAFT RADIAL PLAY (450 g LOAD)	0,02 mm
MAX SHAFT AXIAL PLAY (450 g LOAD)	0,08 mm
MAX RADIAL FORCE (20 mm FROM FRONT FLANGE)	28 N
MAX AXIAL FORCE	10 N

CONNECTION

Lead N°	Color	Gauge	Function
1	BLACK	UL1061 AWG26	PHASE A
2	GREEN	UL1061 AWG26	PHASE A-
3	RED	UL1061 AWG26	PHASE B
4	BLUE	UL1061 AWG26	PHASE B-
UNIPOLAR MOTOR			
5	YELLOW	UL1061 AWG26	COM PHASE A
6	WHITE	UL1061 AWG26	COM PHASE B



42SH38-3AM VM: 24V; 0,4A /Phase Driver: SMD 103



42SH38-4AM VM: 24V; 1,68A /Phase Driver: SMD 103

