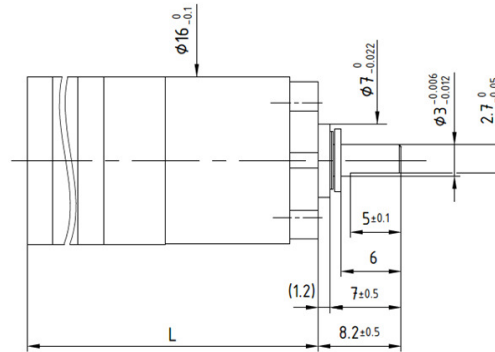
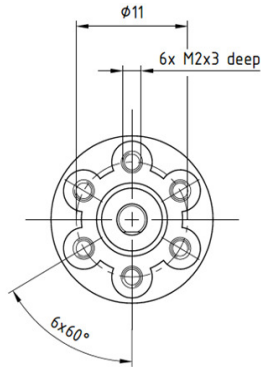


**BA16**

Gearbox with Spur Gears and Planetary Output

Ø 16mm

0.2 Nm

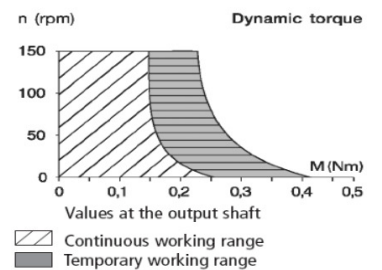


Dimensions in mm

Ratio	****	22.5	40.5	67.5	121.5	202.5	243	364.5	607.8	1093.5	1822.5	3280.5
1	Number of Gear Stages	3	3	4	4	5	5	5	6	6	7	7
2	Direction of Rotation	=	=	≠	≠	=	=	=	≠	≠	=	=
3	Efficiency	0.72	0.72	0.65	0.65	0.59	0.59	0.59	0.53	0.53	0.48	0.48
4	L (mm)	26.7	26.7	29.2	29.2	31.7	31.7	31.7	34.2	34.2	36.7	36.7
5	Weight g (oz)	12 (0.423)	12 (0.423)	13 (0.458)	13 (0.458)	14 (0.493)	14 (0.493)	15 (0.529)	15 (0.529)	15 (0.529)	16 (0.564)	16 (0.564)
6	Available with Motor - L2 = Length with motor (mm)											
	<b>16C18</b>	45.4	45.4	47.9	47.9	51.4	51.4	51.4	52.9	52.9	55.4	55.4
	<b>16N28/78</b>	54.7	54.7	57.2	57.2	59.7	59.7	59.7	62.2	62.2	64.7	64.7
	<b>16G88</b>	54.7	54.7	57.2	57.2	59.7	59.7	59.7	62.2	62.2	64.7	64.7
	<b>17S78</b>	48.4	48.4	50.9	50.9	53.4	53.4	53.4	55.9	55.9	58.4	58.4
	<b>17N78</b>	52.6	52.6	55.1	55.1	57.6	57.6	57.6	60.1	60.1	62.6	62.6
	<b>P110</b>	45.7	45.7	48.2	48.2	50.7	50.7	50.7	53.2	53.2	55.7	55.7
	<b>16DCP/17DCT</b>	52.7	52.7	55.2	55.2	57.7	57.7	57.7	60.2	60.2	62.7	62.7

Characteristics		BA16 · 0 · ....	BA16 2R · 0 · ....
7	Shaft Bearings	Sleeve	Ball Bearing
8	Maximum Static Torque	Nm (oz-in)	0.4 (57)
9	Maximum Radial Force		
	@ 8mm from mounting face	N (lb)	5 (1.1)
10	Maximum Axial Force	N (lb)	10 (2.2)
11	Maximum Press Fit Force	N (lb)	200 (44)
12	Average Backlash @ no-load		1.5°
13	Average Backlash @ 0.3 Nm		3°
	Shaft Play:		
14	-radial	µm	≤ 30
15	-axial	µm	≤ 100
16	Maximum Recommended Input Speed	rpm	8000
17	Operating Temperature Range:	°C (°F)	-30 to +65 (-22 to +150)

**Motor + gearbox = L2**



V09212016