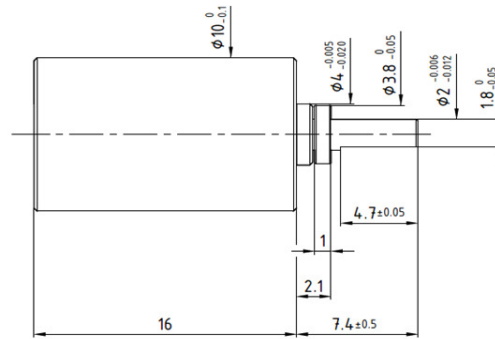
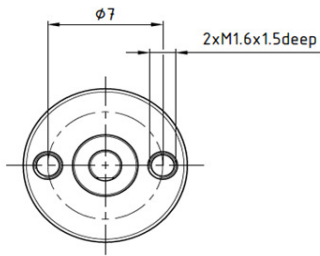


R10

Planetary Gearbox

Ø 10mm

0.1 Nm



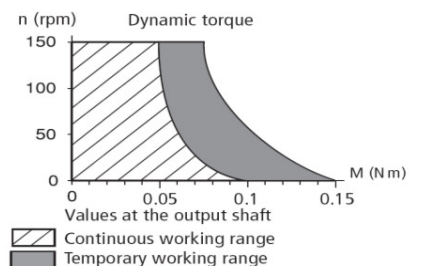
Dimensions in mm

	*	*	*	*	*	*
Ratio ****	4	16	64	256	1024	4096
1 Number of Gear Stages	1	2	3	4	5	6
2 Direction of Rotation	=	=	=	=	=	=
3 Efficiency	0.9	0.8	0.7	0.65	0.6	0.5
4 L(mm)	9	12.5	16	19.5	23	26.5
5 Weight g (oz)	3 (0.105)	4 (0.141)	5 (0.176)	6 (0.211)	7 (0.246)	8 (0.282)
6 Available with Motor - L2 = Length with motor (mm)						
08GS61	25.6	29.1	32.6	36.1	39.6	43.1
08G61	28.6	32.1	35.6	39.1	42.6	46.1
P010	25.4	28.9	32.4	35.9	39.4	42.9
10NS61	27	30.5	34	37.5	41	44.5
12G88	37.2	40.7	44.2	47.7	51.2	54.7

* Ratio available upon request. Please contact us.

Characteristics	R10 • 200 •	
7 Shaft Bearings	Sleeve	
8 Maximum Static Torque	Nm (oz-in)	0.15 (21.2)
9 Maximum Radial Force @ 8mm from mounting face	N (lb)	2 (0.45)
10 Maximum Axial Force	N (lb)	5 (1.125)
11 Maximum Press Fit Force	N (lb)	10 (2.25)
12 Average Backlash @ no-load	1°	
13 Average Backlash @ 0.3 Nm	3°	
Shaft Play:		
14 -radial	µm	≤ 25
15 -axial	µm	50-150
16 Maximum Recommended Input Speed	rpm	10,000
17 Operating Temperature Range:	°C (°F)	-30 to +65 (-22 to +150)

Motor + gearbox = L2



V09282016